

LIMERICK TOWNSHIP

TUDOR & CASHEL TOWNSHIP



MUNICIPALITY OF TWEED

COMPREHENSIVE LAND USE ZONING BY-LAW 2012-____

SCHEDULE 'C'

GEOGRAPHIC TOWNSHIP OF GRIMSTHORPE

THIS IS SCHEDULE 'C' TO BY-LAW 2012-____
PASSED THIS ____ DAY OF _____ 2012

JO-ANNE ALBERT REVE
PATRICIA BERGERON CAO/CLERK

GEOGRAPHIC FEATURES

- HISTORIC URBAN/HAMLET BOUNDARY
- COUNTY BOUNDARY
- MUNICIPAL BOUNDARY
- WATERBODY
- CREEK OR STREAM
- FLOODPLAIN

LAND USE ZONES

- RU - RURAL
- RR - RURAL RESIDENTIAL
- R1 - RESIDENTIAL DENSITY 1
- R2 - RESIDENTIAL DENSITY 2
- MR - MULTIPLE RESIDENTIAL
- LSR - LIMITED SERVICE RESIDENTIAL
- WR - WATERFRONT RESIDENTIAL
- RRC - REC./RESORT COMMERCIAL
- OS - OPEN SPACE
- EP - ENVIRONMENTAL PROTECTION
- ES-EW - ENVIRONMENTALLY SIGNIFICANT - EVALUATED WETLAND
- UR - URBAN RESERVE
- UC - URBAN COMMERCIAL
- RC - RURAL COMMERCIAL
- UI - URBAN INDUSTRIAL
- RI - RURAL INDUSTRIAL
- CF - COMMUNITY FACILITY
- MX - EXTRACTIVE
- MXR - EXTRACTIVE RESERVE
- WD - WASTE DISPOSAL
- PA - PRIME AGRICULTURE

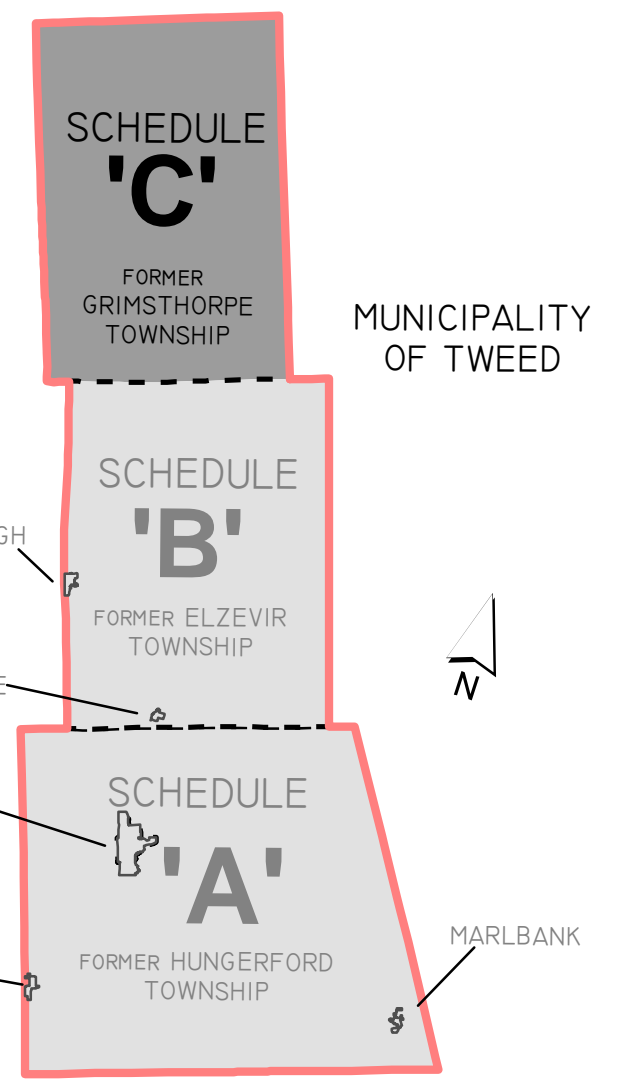
MAP FEATURES

- LOT & CONCESSION NUMBER
- EXCEPTION/SPECIAL ZONE LABEL
- ZONE BOUNDARY
- EXCEPTION/SPECIAL ZONE
- 120M ES-EW SETBACK

PLEASE REFER TO THE ZONING TEXT OF BY-LAW 2012-____ AND ANY AMENDMENTS THERETO, FOR ADDITIONAL INFORMATION. THE OFFICIAL SCHEDULES AND ZONING INFORMATION ARE AVAILABLE AT THE MUNICIPALITY OF TWEED OFFICE. ONLY EXCEPTION AND SPECIAL ZONING PROVISIONS (E.G. RR-1) ARE LABELED TO DIFFERENTIATE THEM FROM STANDARD ZONES (E.G. RR), WHICH ARE REPRESENTED BY THE SYMBOLISM IN THE LEGEND. LOT PARCELS ARE SHOWN. ROAD OWNERSHIP OR ROAD MAINTENANCE LEVELS ARE NOT REPRESENTED.

COMPILED AND PRODUCED BY THE COUNTY OF HASTINGS PLANNING & DEVELOPMENT DEPARTMENT WITH DATA SUPPLIED BY THE ONTARIO GEOSPATIAL DATA EXCHANGE (UNDER LICENSE BY MEMBERS). QUINTE CONSERVATION, GREER GALLOWAY, JP&E AND AINLEY GROUP. THIS PRODUCT IS FOR INFORMATIONAL PURPOSES AND MAY NOT HAVE BEEN PREPARED FOR, OR BE SUITABLE FOR, LEGAL, ENGINEERING OR SURVEYING PURPOSES. THE COUNTY OF HASTINGS DISCLAIMS ALL RESPONSIBILITY FOR ERRORS, OMISSIONS OR INACCURACIES IN THIS.

OVERVIEW MAP FOR ZONE SCHEDULES



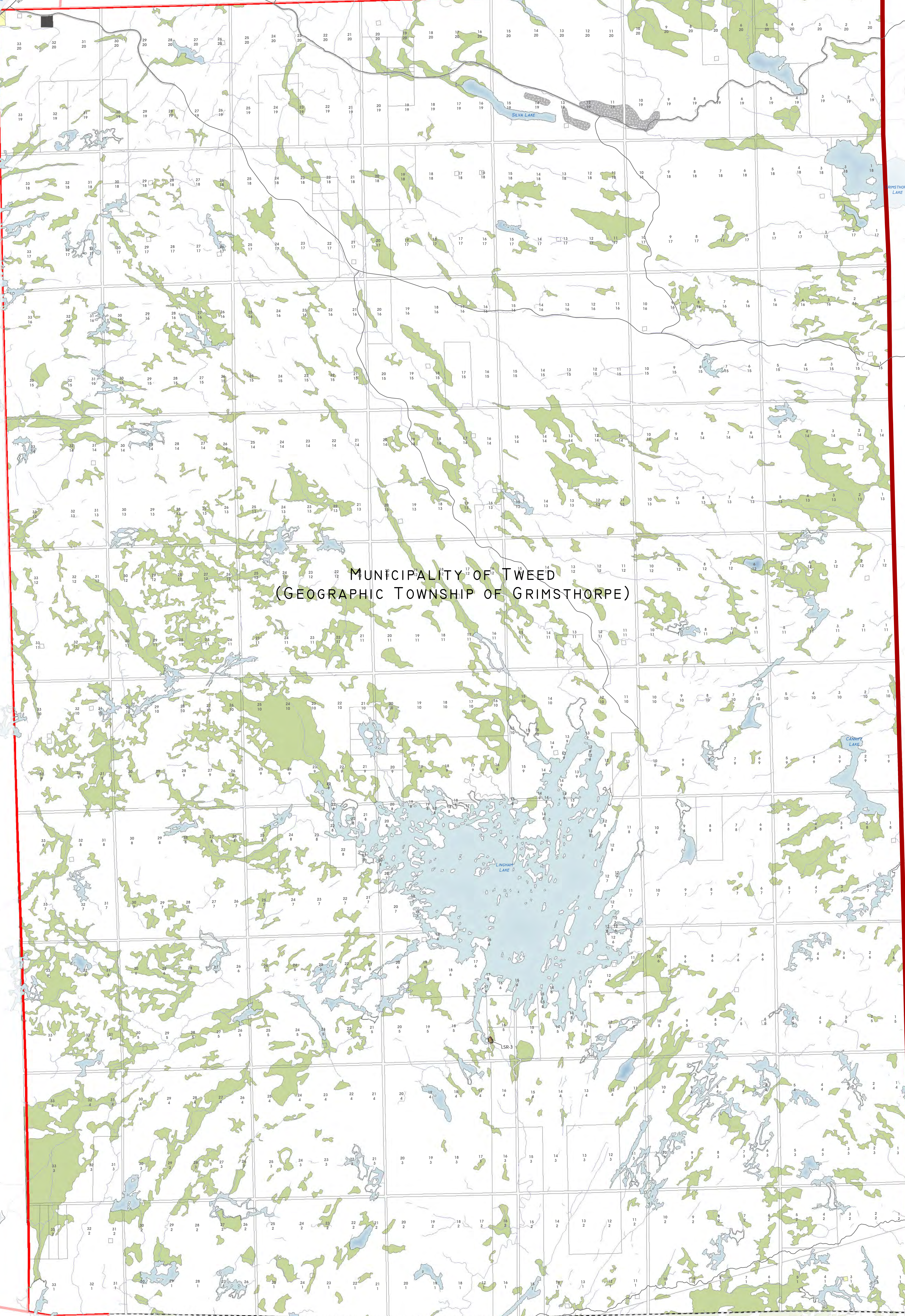
URBAN AND HAMLET AREAS ARE FOUND ON SCHEDULE 'D'

ADDINGTON HIGHLANDS

LENOX & ADDINGTON COUNTY



0 1 2
Kilometres



MUNICIPALITY OF TWEED
(GEOGRAPHIC TOWNSHIP OF GRIMSTHORPE)

TUDOR & CASHEL TOWNSHIP

MADOC TOWNSHIP

SEE SCHEDULE 'B'

SEE SCHEDULE 'B'